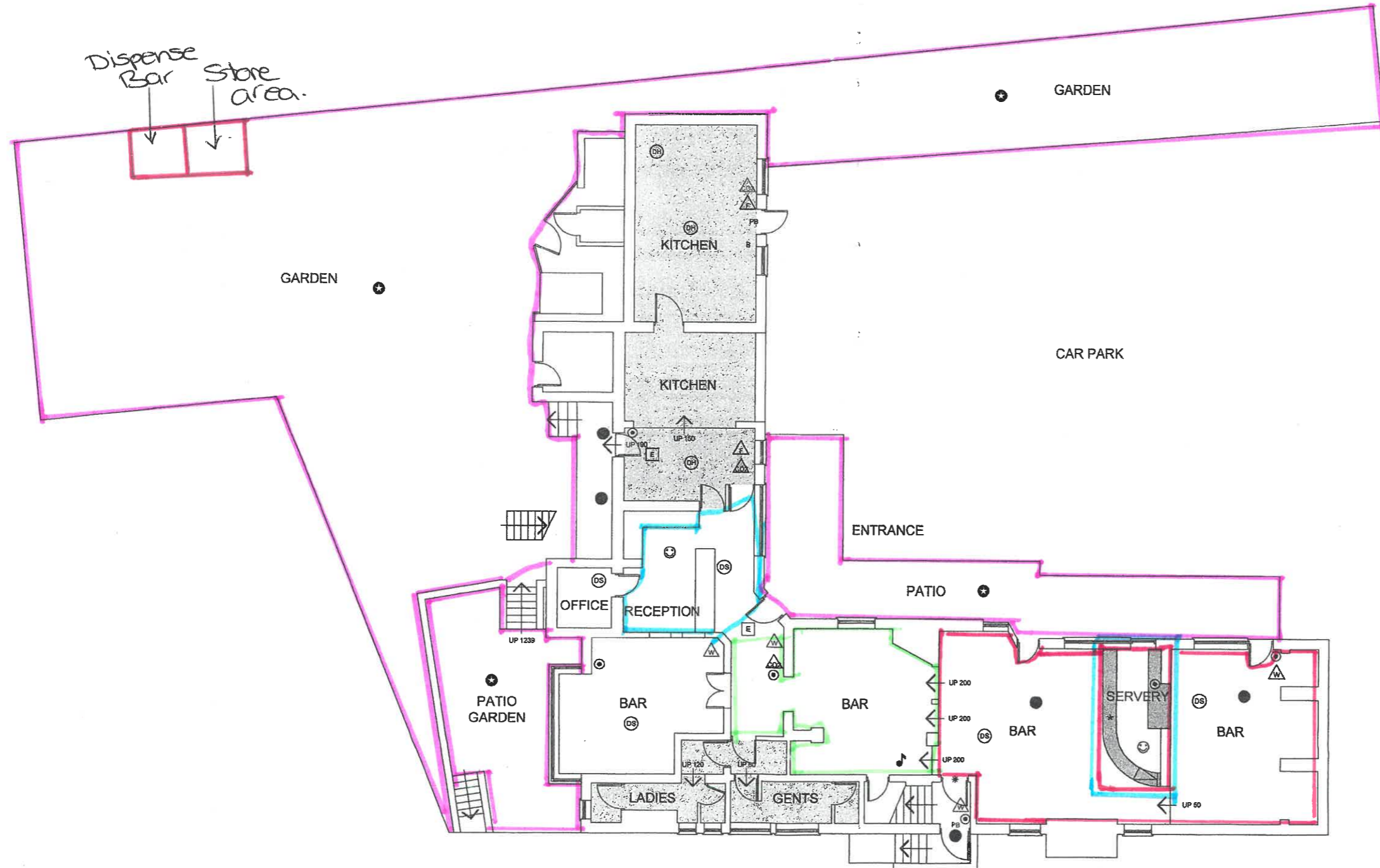


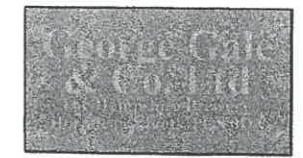
25



- KEY
- EMERGENCY LIGHT (NON MAINTAINED).
 - ⊙ BREAK GLASS CALL POINT.
 - * 1/2 HOUR FIRE RESISTING, SELF CLOSING DOOR & FRAME WITH COLD SMOKE SEALS & INTUMESCENT STRIPS.
 - E EMERGENCY EXIT SIGN (MAINTAINED).
 - DS SMOKE DETECTOR.
 - OH HEAT DETECTOR.
 - A AUDIBLE ALARM.
 - B FIRE BLANKET (BS EN 1869 COMPLIANT).
 - W WATER FIRE EXTINGUISHER.
 - DWP DRY POWDER FIRE EXTINGUISHER.
 - CO2 CO2 FIRE EXTINGUISHER.
 - FAM FOAM FIRE EXTINGUISHER.
 - WCM WET CHEMICAL FIRE EXTINGUISHER.
 - FE FIRE EXIT SIGN (MAINTAINED).
 - PB PANIC BOLT WITH * PUSH BAR TO OPEN * SIGN.
 - KITCHEN AREA
 - TOILET AREA.
 - SALE AND SUPPLY OF ALCOHOL - ON AND OFF SALES.
 - REGULATED ENTERTAINMENT.
 - HOT FOOD AFTER 23.00.
 - AREAS MADE AVAILABLE FOR CONSUMPTION OUTSIDE THE PREMISES.

Red line - Supply of alcohol
Cyan line Hot food after 23:00
Green line Regulated entertainment
Pink line Areas made available for consumption outside the premises.

GROUND FLOOR LAYOUT 1:100



Premises:
The Bull Inn Sonning
 Title: *AI*
Licensed Drawing
 Scale:
1:100
 Date:
14/1/22

DO NOT SCALE

Do not scale from anything other than this ruler ORIGINAL SIZE OF DRAWING A2

This page is intentionally left blank